

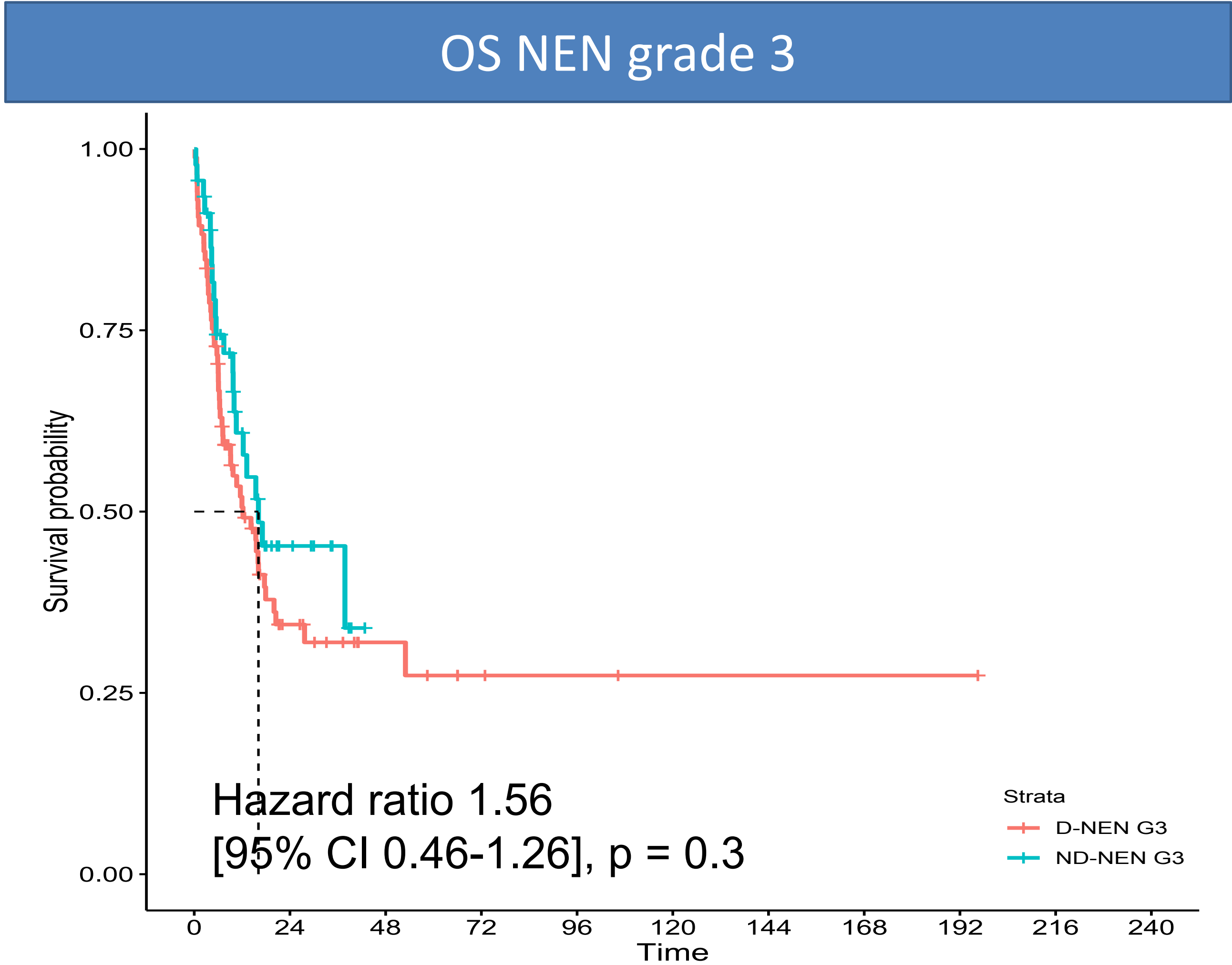
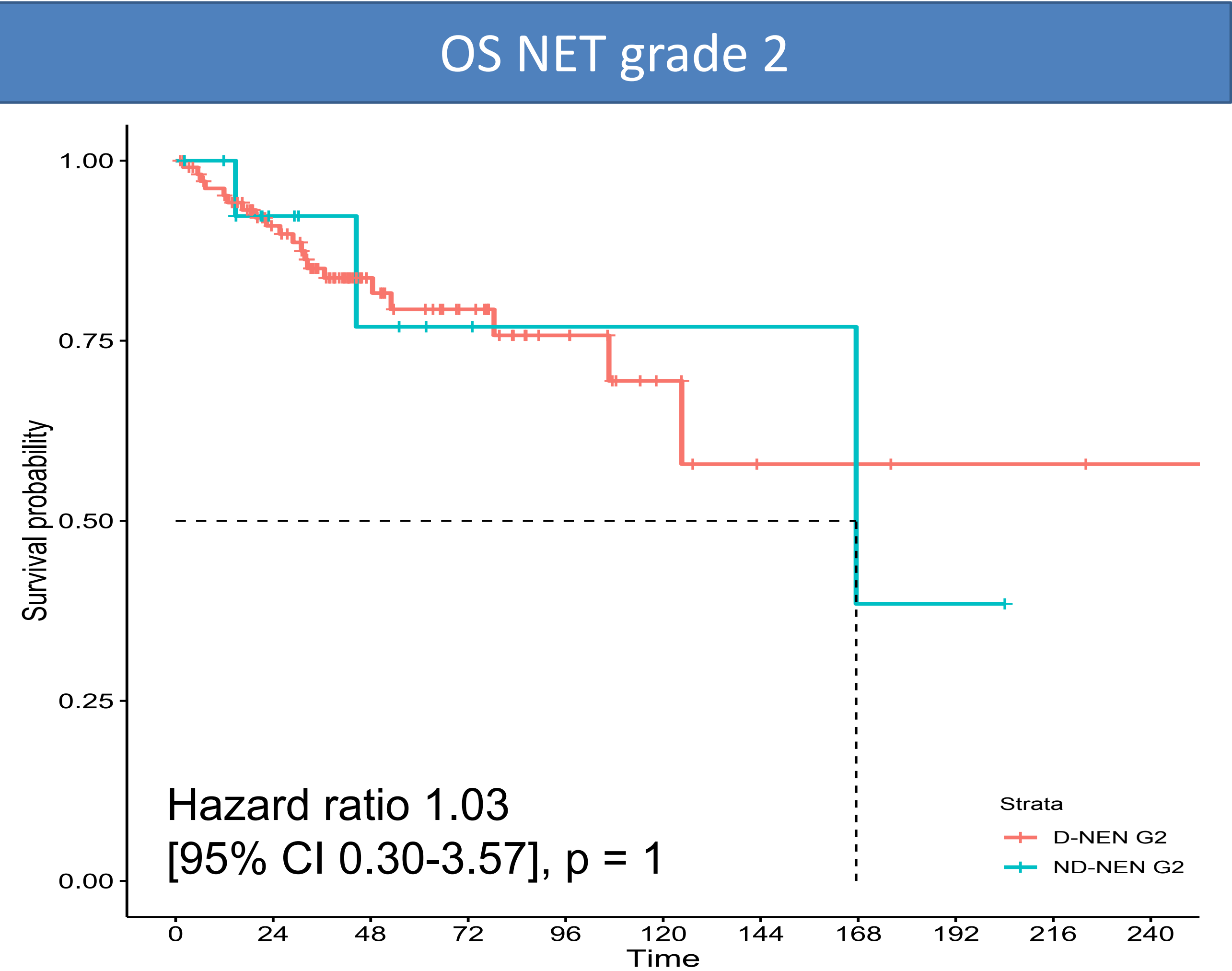
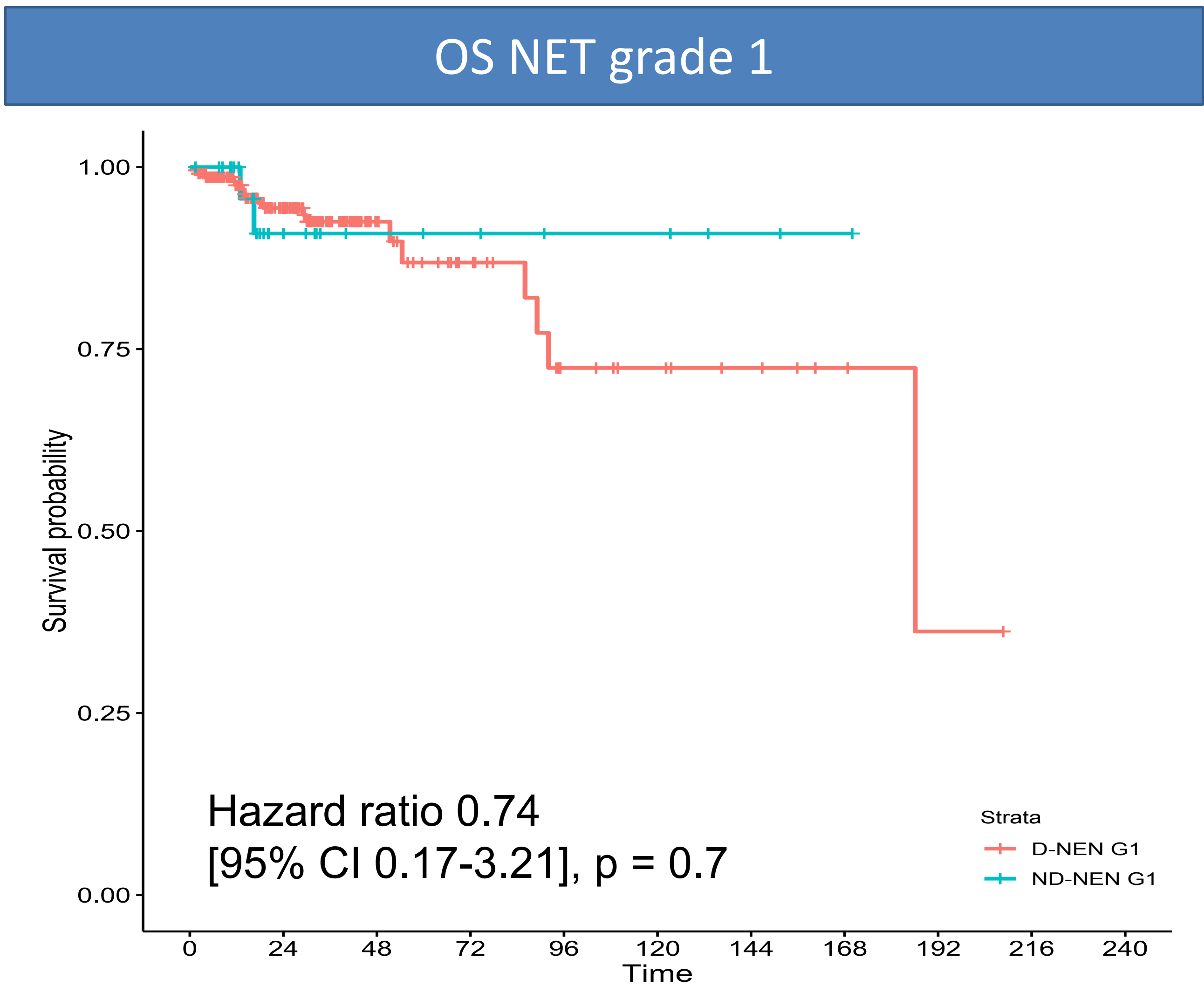
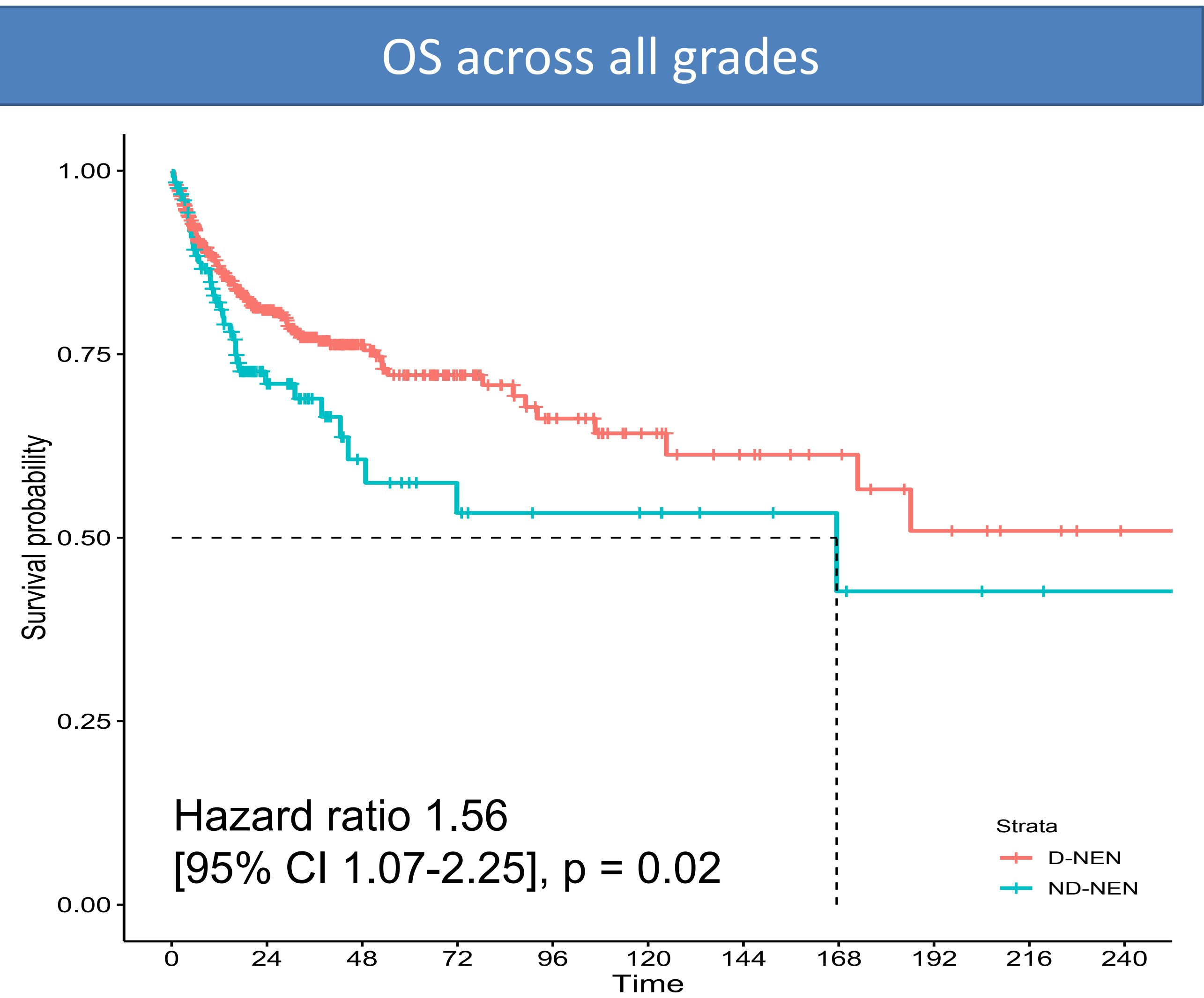
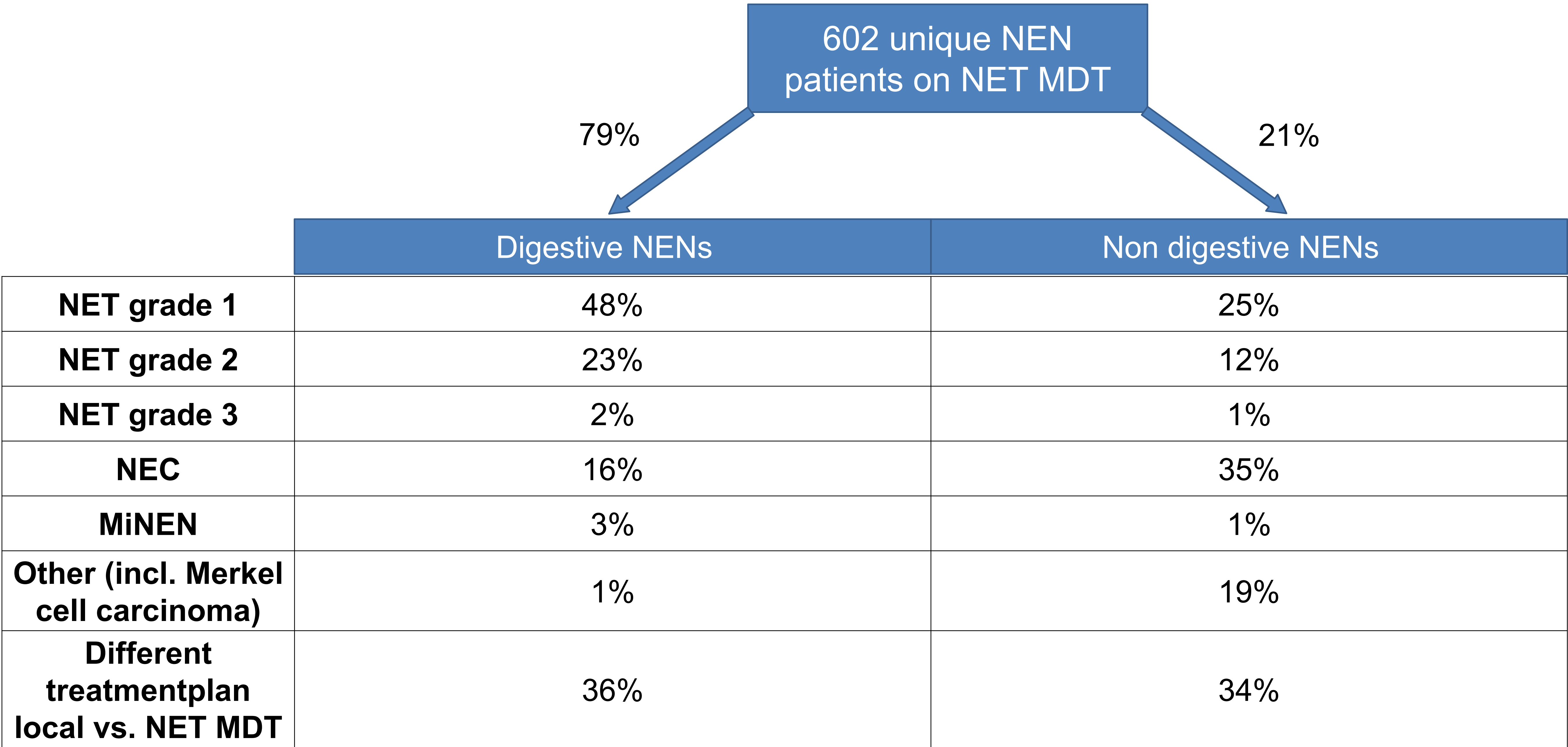
## INTRODUCTION AND AIM

Since 2016 both digestive neuroendocrine neoplasms (D-NENs) and non-digestive NENs (ND-NENs) cases are treated within NETwerk, an ENETS Center of Excellence. We compare the patient characteristics and overall survival (OS) data of D-NEN and ND-NENs.

## MATERIALS AND METHODS

Patient characteristics of all NEN discussed on the NET specific multidisciplinary tumor board (NET MDT) from April 2016 to November 2019 were prospectively recorded. Median overall survival (OS) was calculated by Kaplan-Meier statistics and compared using Cox Proportional Hazard models.

## RESULTS



## CONCLUSIONS

Discussing ND-NENs and D-NENs at the NET MDT leads to treatment change, indicating an added value in both tumor categories. ND-NENs tend to be higher grade than D-NENs, reflected by a poorer OS.